

## About the Partnership

The Partnership, is led by Herefordshire and Worcestershire Health and Care NHS Trust and includes Barnardo's, Action for Children, and Redditch Borough Council, bringing together a range of professionals that will support you as 'parents to be' your children during the early years and will then ensure young people's health needs are met as they move through school towards adulthood.

The Partnership works alongside lots of local organisations and community groups including schools. We identify and address health and wellbeing needs by empowering families and young people to access support networks and groups in the local community.

The Starting Well Partnership works within six district teams across Worcestershire.



These teams are made up of Health Visitors, Parenting Support Workers, Community Public Health Nursery Nurses, Public Health School Nurses, Community Public Health Nurses, Health Care Assistants, Volunteer Coordinators, Community Health Connectors, Business Support Officers and Administrators.

### Website

[www.startingwellworcestershire.nhs.uk](http://www.startingwellworcestershire.nhs.uk)

### Social media

Search 'Starting Well Partnership' on

Facebook to find your local team

Do you have a concern, complaint or comment?

Contact: Patient Relations Team,  
Herefordshire and Worcestershire  
Health and Care NHS Trust, 2 Kings  
Court, Charles Hastings Way, Worcester,  
WR5 1JR

Do you have a communication or information support need?

If so please contact the person who gave you this leaflet so that those needs can be recorded and responded to.



## Welcome to the Starting Well Partnership

Our vision is for Worcestershire to be a wonderful place for all children and young people to grow up. We believe it is important that children and young people grow up safe from harm, to reach their potential and to lead happy, healthy and fulfilled lives.

For more information about the Partnership and the services we deliver, please refer to the information provided within this leaflet.

[www.startingwellworcestershire.nhs.uk](http://www.startingwellworcestershire.nhs.uk)

## Support for Families



Our Health Visitors, Community Public Health Nurses and Community Nursery Nurses will deliver the universal elements of the 0-5 Healthy Child Programme including:

- Antenatal visit, around 28-32 weeks pregnant
- New birth visit, before day 14
- 6-8 week check
- 9-12 month review
- 2.5 yr review

Our Telephone Advisory Service (TAS) line is available for parents to call Monday - Friday 9am - 4pm should they require additional support and advice.

**0300 123 9551**

New parents can also pre-book Health Visitor and baby self weigh clinics



We also support you and your family with a range of birth and beyond, breast/ infant feeding support, parenting groups and introduction to solids to name a few.

## Support for Young People

Our Public Health Nurses (School Health Nurses), Community Public Health Nurses and Health Care Support Workers will deliver the universal elements of the 5-19 Healthy Child Programme:

- Health Needs Assessment Questionnaires
- School Aged Hearing Screen
- National Child Measurement Programme (NCMP)
- Confidential Time4U Drop-ins



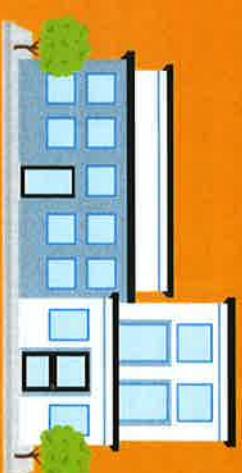
ChatHealth  
11-19 yr olds can  
confidentially text:

**07507331750**

Monday - Friday,  
9am - 4pm and chat  
with a Public Health Nurse.



## Our Family Hubs



Visit one of our fantastic Family Hubs for a range of information, support, activities and services for you and your family



Through our Family Hubs, you can access a wide range of parenting support workshops, courses and groups.

We also have a range of volunteer roles available.

Signposting to other relevant services.

